

Electronic Ballasts



ELECTRONIC BALLASTS FOR FLUORESCENT LAMPS

Lamp type	Lamp sockets	Wattage	Single lamp	Diagram	Multiple lamps	Diagram	
T8	G13	18	EL 1*18 HF	1	EL 2*18 HF	2	
		36	EL 1*36 HF	1	EL 2*36 HF	2	
		58	EL 1*58 HF	1	EL 2*36 HF	2	
		70	EL 1*70 HF	1	EL 2*70 HF	2	
		30 (l=894 mm)	EL 1*36 HF	1	EL 2*36 HF	2	
		36 (l=970 mm)				EL 2*36 HF	2
		38 (l=1047 mm)	EL 1*36 HF	1	EL 2*36 HF	2	

ELECTRONIC BALLASTS FOR COMPACT FLUORESCENT LAMPS

Lamp type	Lamp sockets	Wattage	Single lamp	Diagram	Multiple lamps	Diagram
TC-L	2G11	18	EL 1*18/24 CHF-L/F	3	EL 2*18/24 CHF-L/F	4
		24	EL 1*18/24 CHF-L/F	3	EL 2*18/24 CHF-L/F	4
		36	EL 1*36 HF	1	EL 2*36 HF2F	2
		40	EL 1*36 HF	1	EL 2*36 HF2F	2
		55	EL 1*55 HF2F	1	EL 2*55 HF2F	2
TC-F	2G10	18	EL 1*18 HF	1		
			EL 1*18/24 CHF-L/F	3	EL 2*18/24 CHF-L/F	4
		24	EL 1*18/24 CHF-L/F	3	EL 2*18/24 CHF-L/F	4
		36	EL 1*36 HF	1	EL 2*36 HF2F	2
TC-DE	G24q-2	10/13	EL 1*10/13 CHF	3	EL 2*10/13 CHF	4
		18	EL 1*18 CHF	3	EL 2*18 CHF	4
		26	EL 1*26 CHF	3	EL 2*26 CHF	4
TC-TE	GX24q-2	10/13	EL 1*10/13 CHF	3	EL 2*10/13 CH	4
		18	EL 1*18 CHF	3	EL 2*18 CHF	4
		26	EL 1*26 CHF	3	EL 2*26 CHF	4
		32	EL 1*32 CHF	3	EL 2*32 CHF	4
		42	EL 1*42 CHF	3	EL 2*42 CHF	4
TC-DD	G10q	21	EL 1*18 HF	1		
		28				
		38	EL 1*36 HF	1		

Electronic Ballasts



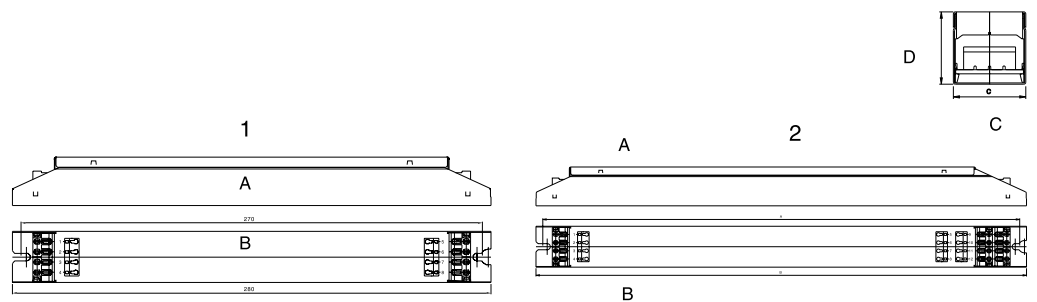
ELECTRONIC BALLASTS FOR T5 LAMPS (16 mm)

Lamp type	Lamp sockets	Wattage	Single lamp	Diagram	Multiple lamps	Diagram
T5	G5	14	¹⁾		¹⁾	
		21	EL 1*21 HFT5	1	EL 2*21 HFT5	2
		28	EL 1*28 HFT5	1	EL 2*28 HFT5	2
		35	EL 1*35 HFT5	1	EL 2*35 HFT5	2

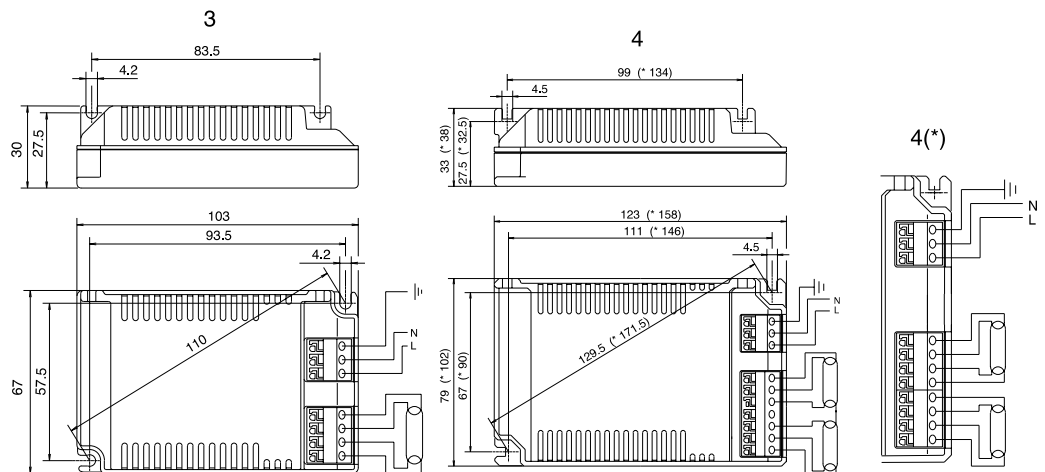
Note:

¹⁾ Under development.

DIMENSIONS



Dimensions	1	2
A (mm)	270	350
B (mm)	280	360
C (mm)	30	30
D (mm)	28	28



Electronic Ballasts



CONTROLLABLE ELECTRONIC BALLASTS 1-10 V (EN60929)

CONTROLLABLE ELECTRONIC BALLASTS FOR FLUORESCENT LAMPS

Lamp type	Lamp sockets	Wattage	Single lamp	Diagram	Multiple lamps	Diagram	
T8	G13	18	EL 1*18 HFC	1	EL 2*18 HFC	2	
		36	EL 1*36 HFC	1	EL 2*36 HFC	2	
		58	EL 1*36 HFC	1	EL 2*36 HFC	2	
		70	EL 1*70 HFC	1	EL 2*70 HFC ²⁾	2	
		30 (l=894 mm)	EL 1*36 HFC	1	EL 2*36 HFC	2	
		36 (l=970 mm)					
		38 (l=1047 mm)	EL 1*36 HFC	1	EL 2*36 HFC	2	

CONTROLLABLE ELECTRONIC BALLASTS FOR FLUORESCENT LAMPS

Lamp type	Lamp sockets	Wattage	Single lamp	Diagram	Multiple lamps	Diagram
TC-L	2G11	18	EL 1*18/24 CHFC-L/F	3	EL 2*18/24 CHFC-L/F	4
		24	EL 1*18/24 CHFC-L/F	3	EL 2*18/24 CHFC-L/F	4
		36	EL 1*36 HFC2F	1	EL 2*36 HFC2F	2
		55	EL 1*55 HFC2F	1	EL 2*55 HFC2F ²⁾	2
TC-F	2G10	18	EL 1*18/24 CHFC-L/F	3	EL 2*18/24 CHFC-L/F	4
		24	EL 1*18/24 CHFC-L/F	3	EL 2*18/24 CHFC-L/F	4
		36				
TC-DE	G24q-2	10/13	EL 1*10/13 CHFC	3	EL 2*10/13 CHFC	4
		18	EL 1*18 CHFC	3	EL 2*18 CHFC	4
			EL 1*18 CC4F			
		26	EL 1*26 CHFC	3	EL 2*26 CHFC	4
TC-TE	GX24q-2	10/13	EL 1*10/13 CHFC	3	EL 2*10/13 CHFC	4
		18	EL 1*18 CHFC	3	EL 2*18 CHFC	4
			EL 1*18 CC4F			
		26	EL 1*26 CHFC	3	EL 2*26 CHFC	4
		32	EL 1*32 CHFC	3	EL 2*32 CHFC	4
		42	EL 1*42 CHFC			
TC-DD	G10q	21				
		28				
		38				

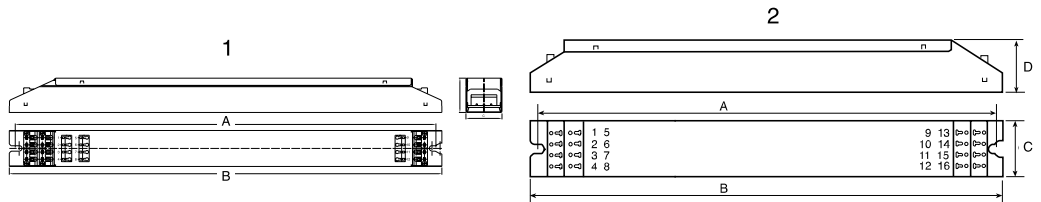


Electronic Ballasts

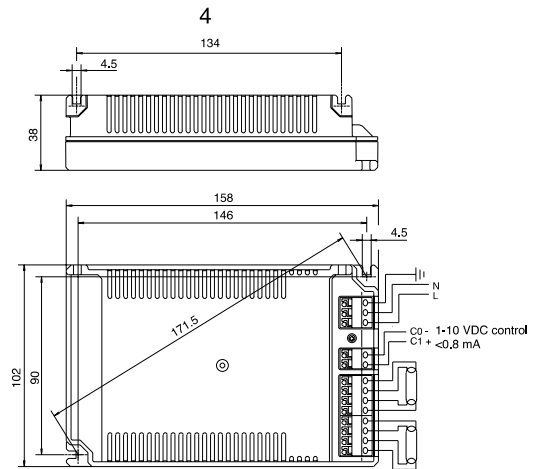
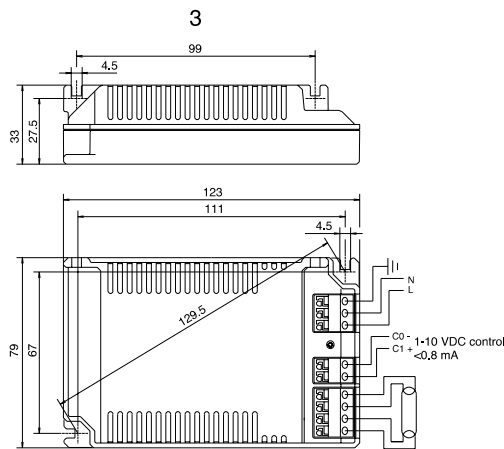


CONTROLLABLE ELECTRONIC BALLASTS 1-10 V (EN60929)

DIMENSIONS



Dimensions	1	2	2 (*)
A (mm)	350	420	190
B (mm)	360	430	180
C (mm)	30	30 ²⁾ (42)	42
D (mm)	28	28	28



Electronic Ballasts



BALLAST SWITCHING TABLE

Controllable electronic ballast 1-10V	T3 rotary potentiometer	MIMO HES37580 / HES37590	SOLO HES16450	Ballasts per channel AMBIENCE / IMAGINE HES98020 / HES98030 / HES98040
EL 1*18 HFC	15	15	15	15
EL 1*36 HFC	12	15	15	15
EL 1*36 HFC2F	12	15	15	15
EL 1*55 HFC2F	9	15	15	15
EL 1*58 HFC	9	15	15	15
EL 1*10/13 CHFC	15	15	15	15
EL 1*18 CHFC-L/F	15	15	15	15
EL 1*24 CHFC-L/F	12	15	15	15
EL 1*26 CHFC	12	15	15	15
EL 1*32 CHFC	12	15	15	15
EL 1*42 CHFC	9	15	15	15
EL 2*18 HFC	12	15	15	15
EL 2*36 HFC	9	15	15	15
EL 2*36 HFC2F	9	15	15	15
EL 2*55 HFC2F	6	15	15	15
EL 2*58 HFC	6	15	15	15
EL 2*10/13 CHFC	12	15	15	15
EL 2*18 CHFC-L/F	12	15	15	15
EL 2*24 CHFC-L/F	9	15	15	15
EL 2*26 CHFC	9	15	15	15
EL 2*32 CHFC	9	15	15	15

Technical Information

www.quo-vadis.com technical@quo-vadis.com

www.quo-vadis.com

Electronic Ballasts



DIMMABLE ELECTRONIC BALLASTS FOR FLUORESCENT LAMPS

Lamp type	Lamp sockets	Wattage	Single lamp	Diagram	Multiple lamps	Diagram
T8	G13	18	EL 1*18 FD	1	EL 1*36/2*18 FD	1
		36	EL 1*36/2*18 FD	1	EL 2*36 FD	2
		58	EL 1*58 FD	1	EL 2*58 FD	2
		70	EL 1*70 FD	1	EL 2*70 FD	2
		30 (l=894 mm)	EL 1*36/2* FD	1		
		36 (l=970 mm)	EL 1*36/2*18 FD	1	EL 2*36 FD	2
		38 (l=1047 mm)	EL 1*58 FD	1	EL 2*58 FD	2

DIMMABLE ELECTRONIC BALLASTS FOR COMPACT FLUORESCENT LAMPS

Lamp type	Lamp sockets	Wattage	Single lamp	Diagram	Multiple lamps	Diagram
TC-L	2G11	18	EL 1*18 FD2F	1	EL 1*36/2*18 FD2F	1
		24	EL 1*24 FD2F	1	EL 2*24 FD2F	2
		36	EL 1*36/2*18 FD2F	1	EL 2*36 FD2F	2
		40				
		55				
TC-F	2G10	18				
		36	EL 1*36/2*18 FD2F	1	EL 2*36 FD2F	1
TC-DE	G24q-2	18				
		26	EL 1*24 FD2F	1		
TC-TE	GX24q-2	18				
TC-DD	G10q	21				
		28	EL 1*24 FD2F	1		
		38	EL 1*36/2*18 FD			

REMARKS:

HELVAR EL-FD and EL-FD2F ballasts are for use when dimming fluorescent lamps with leading edge phase control dimmers. The dimmers need to fulfil the following criteria:

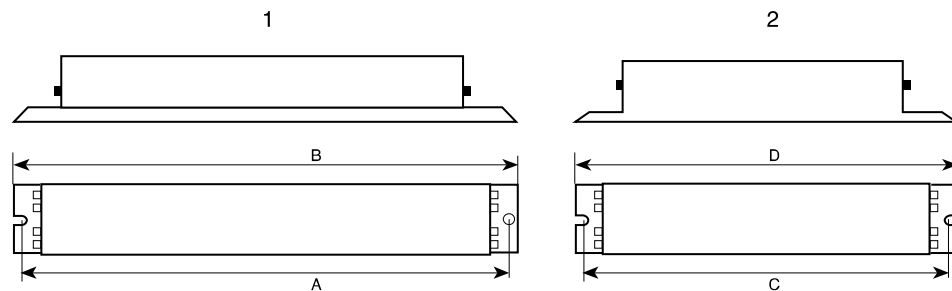
1. The dimmer must have an adjustable minimum level of up to 135V (rms), to ensure correct heating of the lamp cathodes.
2. Due to the complexity of the load (electronic ballast, filter chokes), an over-voltage condition may arise. Therefore, the dimmer must have an adjustable maximum level such that the output voltage is limited to 230V.
3. The dimmer used must be designed for inductive loads and a bottom load may be required depending on the type of dimmer.
4. In order to guarantee illumination of the lamp, the dimmer must provide a sufficiently long starting pulse. If a starting pulse is not provided the lamps must be started at 100% before they may be dimmed.
5. Over-voltage. The dimmer must be able to withstand a minimum of 800V (filters and thyristors).

Electronic Ballasts



DIMMABLE ELECTRONIC BALLASTS

DIMENSIONS



Dimensions	1	2
A (mm)	180	220
B (mm)	190	230

REMARK:

Two filter chokes must be used.

EL-FD BALLAST LOAD TABLE

Electronic ballasts	Small dimmers		SOLO		Ballasts per 10A channel AMBIENCE / IMAGINE HES98020 / HES98030 / HES98040
	LDE 102	LDE 105	HES16000 HES16400	HES25000	
EL 1*18 FD	1 - 16	2 - 45	1 - 126	1 - 196	1 - 80
EL 1*36/2*18 FD	1 - 9	2 - 26	1 - 71	1 - 110	1 - 46
EL 2*36 FD	1 - 4	1 - 13	1 - 36	1 - 56	1 - 23
EL 1*58 FD	1 - 6	1 - 17	1 - 47	1 - 73	1 - 30
EL 2*58 FD	1 - 3	1 - 8	1 - 23	1 - 35	1 - 15
EL 1*18 FD2F	1 - 16	2 - 45	1 - 126	1 - 196	1 - 80
EL 1*36/2*18 FD2F	1 - 8	2 - 26	1 - 71	1 - 110	1 - 46
EL 1*24 FD2F	1 - 11	2 - 33	1 - 93	1 - 145	1 - 58
EL 2*24 FD2F	1 - 5	1 - 15	1 - 48	1 - 75	1 - 30
EL 2*36 FD2F	1 - 4	1 - 13	1 - 35	1 - 54	1 - 22

REMARK:

For dimmer packs HES89000 and HES99300, the above loads are maximums for the whole dimmer pack. The load can be distributed over the four channels.